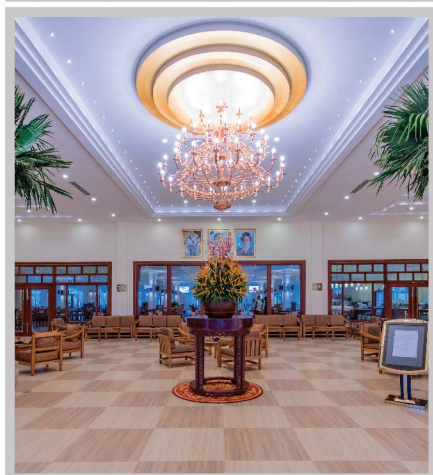
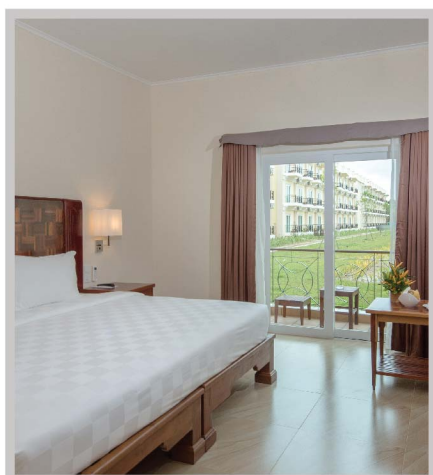




SOKHA PALACE SIEM REAP HOTEL

Sokha Palace Siem Reap Hotel is an unrivalled comfort hotel with the grandeur of an elegant lobby combined with the finest Angkor sculptural carpentry and stone craftsmanship with fresh modern features and 4 Star facilities creating the unique space in Siem Reap. The location conveniently close to the Angkor ticket booth, 15 minutes away from Siem Reap International Airport while just 10 minutes from Siem Reap city center. The hotel's location provides for its distinguished guest the tranquility of a true hotel atmosphere, while being neighbor to the Angkor Tourist & Cultural Complex, closes to within walking distance to attractions and entertainment areas such as Palm Container Night Market.



TRANSPORTATION

FROM	DURATION	BY	FROM	DURATION	BY
Airport REP	15min	Car	Old Market	10min	Car
Angkor Wat Temple	5min	Car	Pub Street	10min	Car
			Angkor Golf Resort	15min	Car

ACCOMMODATION

Sokha Palace Siem Reap Hotel offers 466 guest rooms, multiple dining outlets, the large swimming pool. All guest room provide the convenience of the modern day to create a comfortable and functional space. Spend some relaxing time in the evening at the balcony and overlook to the garden surroundings. Enjoy some of the in-house decision offerings & internet connectivity on your 32" TV screen before relaxing on your King size in the evening.

ROOM TYPES	NUMBER OF ROOM	AREA (SQM)	FLOORS
Superior Garden View	343	30	All Floor
Deluxe Pool View	84	30	All Floor
Palace Room	20	39.5	All Floor

RESTAURANTS AND BARS

The hotel has multi-unit restaurants and bars proving global cuisine with charming views. Discover the international culinary journey with us!

KRAVAN RESTAURANT

Serving Asian delicacies for breakfast and poolside dining throughout the day.

Operation: Mon-Sun
Breakfast: 06:00-10:00
Lunch: 11:00-14:00

TURMERIC RESTAURANT

Set adjacent to the magnificent hotel gardens Turmeric Restaurant tantalizes the taste buds with an Asian oriented buffet breakfast menu and buffet dinner with khmer traditional dancing show, showcasing the finest of Cambodia's fresh produce and ingredients.

Operation: Mon-Sun
Breakfast: 06:00-10:30
Dinner: 17:30-22:00

LEMONGRASS RESTAURANT

Lemongrass offers private dining for discerning clientele, a taste of Pan Asian couture Cuisine. The beverage selection chosen will compliment all dishes on the menu.

Operation: Mon-Sun
07:00-22:00

TAKEZONO RESTAURANT

Boasting a beautiful Japanese style décor, the Takezono provides a relaxing atmosphere and is tastefully decorated. This restaurant consist of an open sushi & sashimi bar, teppanyaki tables and private rooms.

Operation: Mon-Sun
10:00-22:00



POOLSIDE BAR & TERRACE

After an exhausting day of visiting the Angkor Wat World Heritage site, you may want to spend a little bit relaxation time at our pool and enjoy the refreshments of the snacks at our Poolside Bar has to be offered.

Operation: Mon-Sun
10:00-23:00
Pool Opening Hours between:
10:00-21:00

JASMINE SPA

The Sokha Hotels signature Jasmine Spa offers pampering at its most luxurious level. The 21 treatment rooms available at the Sokha Siem Reap Resort & Convention Centre outlet provide the opportunity for you to indulge in the ultimate relaxation of mind, body and spirit. This tranquil haven offers a delectable range of body, beauty and spa treatments to choose from which will see you walk away as if floating on air.

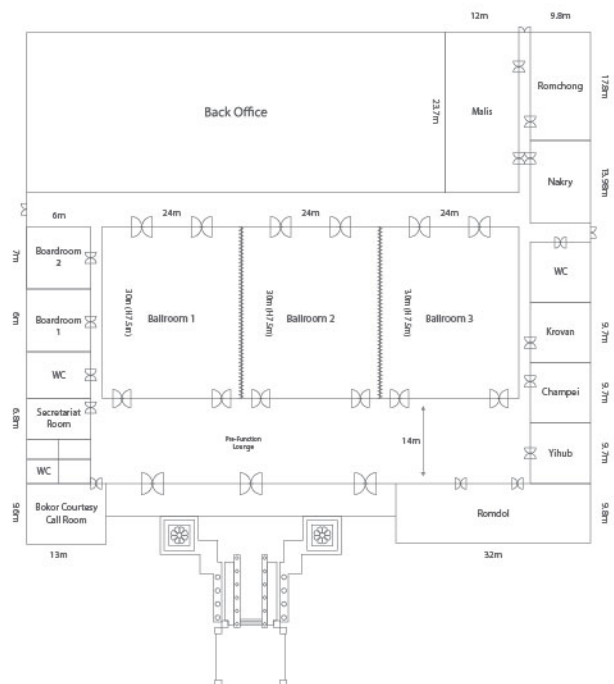
Operation: Mon-Sun
08:00 – 22:00
Capacity: 21 treatment spa suites with 32 spa beds

CONFERENCE CENTER AND MEETING SPACES

As a leading destination for meetings, incentives, conferences and exhibitions in Siem Reap, Sokha Siem Reap Resort & Convention Center is the ideal venue for your events. The hotel have spacious and comfortable grand ballroom that can accommodate up to 3,600 guests and can be divided into 3 separate ballroom with accommodating up to 1,000 guests and 9 multi-purpose meeting rooms ranging from 88 square meters to 300 square meters, and other specious venues with magnificent main pool view, advanced audiovisual equipment to meet your every need.

ROOM TYPE	Measurement (Meter)	Height (Meter)	Theater	Classroom	U-shape	Boardroom	Cocktail Reception	Banquet	Buffer
Ballroom I	30x24	7.5	1,150	360	200	200	1,300	340	340
Ballroom II	30x24	7.5	1,150	360	200	200	1,300	340	340
Ballroom III	30x24	7.5	1,150	360	200	200	1,300	340	340
Grand Ballroom	30x72	7.5	3,600	1,080	500	500	4,000	1,100	1,100
Pre-function Lounge	14x78	7.5					1,500	420	420
Romdol Room	9.8x32	3.5	300	85	70	70	300	140	140
Yihub	9.7x9.8	3.5	90	45	25	25	80	50	50
Champey Room	9.7x9.8	3.5	90	45	25	25	80	50	50
Kravan Room	9.7x9.8	3.5	90	45	25	45	80	50	50
Nakry Room	13.5x9.8	3.5	130	65	35	20	110	60	60
Romchong Room	17.8x9.8	3.5	160	85	45	30	150	80	80
Secreteriat Room	6.8x10.5	3.5	30	30	20	25	30	20	x
Malis Room	23x12	3.5	300	150	50	50	250	160	x
Bokor Courtesy	9.6x12.9	3.5	80	50	30	35	80	60	60
Boardroom I	6x6	3.5	30	12	15	15	15	10	x
Boardroom II	6x7	3.5	40	18	17	17	20	10	x
Pool	780 Pieces		x	x	x	x	1,200	1,000	1,000

FLOOR PLAN



SOKHA PALACE SIEM REAP HOTEL

Road 60, Angkor Cultural & Tourism Complex Junction, Phum Trang, Sangkat Slorkram, Siem Reap, Kingdom of Cambodia
E: sokhapalace.rep@sokhahotels.com | T: +855 63 961 999 | F: +855 63 961 888
www.sokhahotels.com.kh